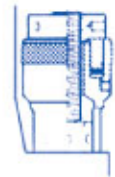
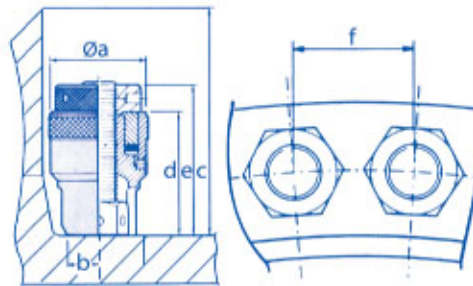


- Compact and Ergonomical Design - For easy diver handling
- Reliable - Made of High-Grade alloy steel
- Non-Slip Surface - For good diver's grip
- Twin Hydraulic Connections - For simple quick hose assembly
- 30mm Long Piston Stroke
- Available with Split Nut or Solid Round Reaction Nut

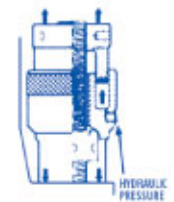


## Sub-Sea Bolt Tensioner

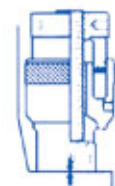
- ✓ Cover full range of bolt sizes from 1" to 3½"
- ✓ Up to work load of 253 Tonnage Force



Bolt tensioner is assembled onto the Bolt.  
Note : An extra length of bolt is required above the hexagon nut.



Hydraulic pressure develops axial force which stretches the Bolt.  
\* Stroke indicator shows bolt tensioner approaching maximum stroke.



Hexagon nut is tightened against application face.  
Pressure released.  
Bolt tensioner removed.

### Technical Specification

MODEL		BOLT DIA		MAX LOAD	HYDRAULIC AREA	STROKE	TOOL WEIGHT	TOOL DIMENSIONS (mm)							
Imperial	Metric	in	mm	TONF	KN	in <sup>2</sup>	mm <sup>2</sup>	mm	kg	a	b	c	d	e	f
1MTST:1000	1MTST:0024	1"	24	24.58	245	2.53	1634	30	3.2	82	25	218	120	144	61
1MTST:1125	1MTST:0027	1 1/8"	27	24.58	245					82	25	218	120	144	64
2MTST:1250	2MTST:0033	1 1/4"	33	38	379.2	3.92	2532	30	4.8	100	28	240	131	159	75
2MTST:1375	2MTST:0036	1 3/8"	36	38	379.2					100	28	240	131	159	78
3MTST:1500	3MTST:0039	1 1/2"	39	55.4	552	5.71	3688	30	6.2	112	35	249	133	166	84
3MTST:1625	3MTST:0042	1 5/8"	42	55.4	552					112	35	249	133	166	87
4MTST:1750	4MTST:0045	1 3/4"	45	75.6	753	7.79	5027	30	8.5	128	41	271	140	178	95.5
4MTST:1875	4MTST:0048	1 7/8"	48	75.6	753					128	41	271	140	178	98
5MTST:2000	5MTST:0052	2"	52	108	1076	11.12	7174	30	12.2	148	48	296	152	198	121
5MTST:2250	5MTST:0056	2 1/4"	56	108	1076					148	48	296	152	198	116
6MTST:2500	6MTST:0064	2 1/2"	64	165	1644	17.0	10968	30	19.2	176	58	335	168	224	136
6MTST:2750	6MTST:0072	2 3/4"	72	165	1644					176	58	335	168	224	141
7MTST:3000	7MTST:0076	3"	76	253.4	2525	26.1	16870	30	29	216	53	373	192	260	162
7MTST:3500	7MTST:0090	3 1/2"	90	253.4	2525					216	53	373	192	260	173

Tool operates up to maximum pressure of 21,750 psi / 1500 bar

- Designed for 1500bar (21,750psi) hydraulic bolt tensioning tools
- Highly efficient system built to handle toughest condition



Air-Driven



Electric-Driven



## Air/Electric-Driven Hydraulic Bolt Tensioner Pump

### Technical Specification

	Air-Driven BT Pump	Electric-Driven BT Pump
<b>Model</b>	<b>Petron A Pump-1</b>	<b>Petron E Pump-1</b>
Description	Air-Driven Bolt Tensioning Pump	Electric-Driven Bolt Tensioning Pump
Drive Specification	AZ-2-323 (Pump)	Single-Phase AC Motor
Input Requirement	6bar / 50cfm (Air-input)	220Vac, 1 phase, 4 pole, 2 HP
	0.375 inch (Hydraulic Piston Ø)	1.5 KW Power
	0.1105 inch <sup>2</sup> (Hydraulic Piston Area)	9.64 ~ 8.43 Amp Current
Output Capacity	Volume per stroke ~ 0.276 inch <sup>2</sup> (4.52 cc)	Speed ~ 1400 rpm
Max Flow rate	59 inch <sup>2</sup> /min	2.4 litre/min
Tank Capacity	10 litres (2.6 gallon)	10 litres (2.6 gallon)
Weight with oil	40 kg	40 kg
Ambient Operational Temperature	-20°C to +50°C	-20°C to +50°C
Sound Emission	<66 dB (A)	<66 dB (A)
Max Operating Pressure	21,750 psi (1500 bar)	21,750 psi (1500 bar)
Length	450 mm	410 mm
Width	450 mm	310 mm
Height	480 mm	620 mm
Interface Connections	9/16 - 18UNF (Hydraulic Port Size)	5 m (Remote control cable length)
	1/2" NPT (Air Supply Inlet Size)	5 m (Electric supply cable length)
Oil level/temperature gauge at tank	Yes	Yes
Pressure Gauge (Dia, 150 mm)	Precision +/- 1% FS accuracy (25,000 psi)	Precision +/- 1% FS accuracy (25,000 psi)
Pressure Gauge scale	Double (psi / bar)	Double (psi / bar)
Full Frame	Tubular Stainless Steel for max protection and easy transport	Tubular steel for max protection and easy transport